

OCTOBER 2018

RADFORD
FORGE NEWS

Occasional Newsletter of the Friends of Radford's Green Environment

PUMPKIN CARVING 27th OCTOBER!

FORGE has just passed its second birthday. As well as being (we hope) a success with FoRGE's stated aims, we have also had unexpected financial success thanks to the high turnout for paying events and some very generous donations.

So, we would like to give something back and are pleased to announce that we are holding a Free Pumpkin Carving Event, to young people from the village, in the Community Hall on 27th October from 3pm to 6pm.

We will provide pumpkins and child- safe tools with which to carve as well as aprons

so you won't mess up your fancy dress (see below). Refreshments will

also be available so come along and design and carve your pumpkin. Please note that primary school aged children must bring along an adult to supervise.

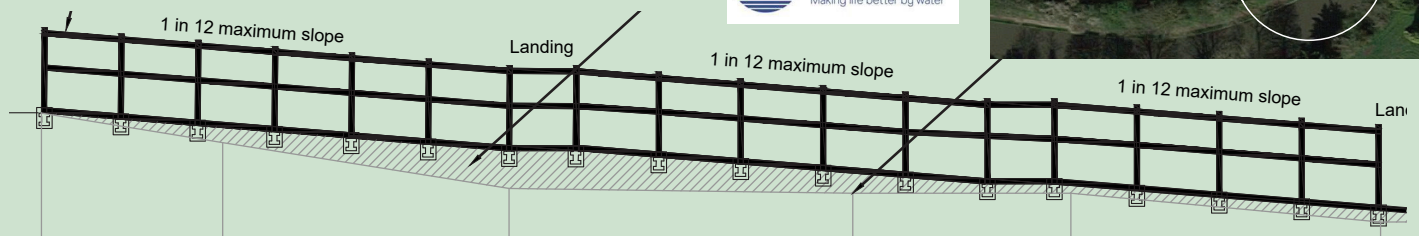
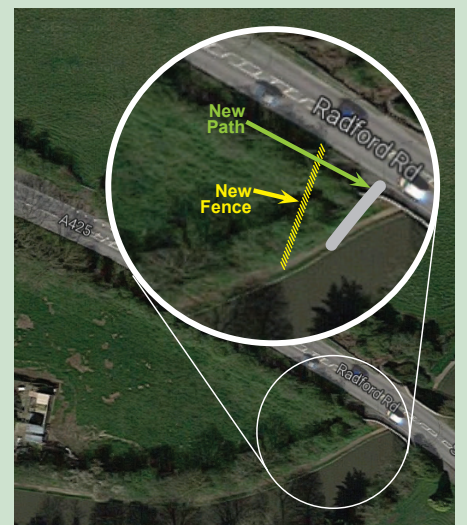
The timing will allow you to round off your day by popping next door afterwards to join in the fun at the Social Club's Halloween Party where they are offering games, a fancy dress competition and disco from 6pm.



Canal Access – Success!

We are pleased to announce the land sale has gone through and the Canal and River Trust (CRT) now own the small triangle of land to build a secure safe pedestrian and cycle access to the canal towpath west of the village where the canal crosses the A425.

Stage two begins now. The CRT are currently seeking funding for construction work. FoRGE may also be holding some fundraising events. Watch this space...



PARISH FOOTPATHS TEAM



ForGE Footpaths maintenance group: Back (l to r): Judy Steele, Gary Stocker, Julia Cooley, Helen Dinsdale, Front: Emma Nelson

It has long been an ambition of ForGE to be involved with the maintenance of footpaths around Radford and we are now able to report that we are on our way. As you can see from the photos, a footpath group is an established tradition that has lapsed in recent years.

After a meeting of interested villagers in June, we have received information, support and training from the Warwickshire footpaths officer. First aid training has been provided and tools have been delivered that can be stored at a group member's house in the village. This is a bonus as we thought initially that we would have to arrange to have tools delivered or picked up every time we wanted to work. As it is, we will just have to make sure

that we have a first aider with us every time we go out, to comply with insurance which is also provided.

Within the group we have identified somebody who will liaise with land-owners. We are aware that the routes of some paths have deviated from their original course either because they are not correctly marked or not marked at all. We hope to work with both the land-owners and the rights of way officer to avoid inadvertent trespassing in future. New volunteers welcome.

Flashback to 1991

This isn't the first time villagers have mucked in to maintain footpaths. See this clip from the Leamington Observer 15 Aug 1991 and the action photo (left)



● Working with stile. Members of the Radford Semele Footpath Volunteers take the strain with wood for a new stile. From the left, Harry Titmus, John Blackwell, David Smith and Paul Heaton.

Radford Semele Footpath Volunteers are entering into the spirit of Footpath Fortnight by stepping up their stile building project.

The volunteers have set themselves the task of opening all the pathways in Radford Semele district, and so far they have built 10 stiles and opened four pathways.

David Smith footpath overseer in Radford Semele, said: "All the paths are open but they need improving and the best way of improving them is by replacing broken down stiles."

Other groups taking part in Footpath Fortnight include the War-

wickshire Conservation Volunteers who are clearing storm damaged trees from the old Kenilworth to Berkswell railway line walk on Wednesday August 21.

Anyone interested in helping should contact Gillian Luscombe on 412342.



Photo: Gary Stocker

**WHITE LION
RADFORD SEMELE**

DEFIBRILLATOR ON WALL FACING CAR PARK

Mon - Sat Midday-11.00pm
Sunday Midday-10.30pm
60 SOUTHAM ROAD
01926 425770

NEIGHBOURHOOD PLAN UPDATE

It's a long process, but work on the Neighbourhood Plan has not stopped. The volunteers from the Neighbourhood Plan group have been looking at all the comments they received from the last consultation and are weaving them into the Plan where possible.

The next step is to discuss the draft with Warwick district council and after that it can be formally submitted to them for approval.

Then it goes to an Inspector for acceptance.

The last step is a referendum asking the villagers if they accept the plan.

It's still possible at the moment to make a comment if you wish to via the website or by email: rsneighbourhoodplan@wixsite.com



RADFORD SEMELE
NEIGHBOURHOOD
PLAN

Plant Sale success on Royal Wedding day



This year's plant sale exceeded our expectations in every respect. Despite competing head-to-head with the Royal Wedding on May 19th, the sale raised £160 for FoRGE funds, a £30 increase on last year.

A last-minute change of time enabled people to attend the plant sale and still catch the national event on TV and we were also blessed with glorious sunshine in contrast to last year's downpour.

We were greatly helped by the sales of surplus plants at the village shop in subsequent weeks. Thanks to Best One!

Thank you to those who donated plants and cakes and who volunteered on the day and to all of you for buying plants to support FoRGE.

Dave Steele

Do your bit whenever you can! – says the Radford Ranter

Recycling has been in the news a lot this year. The long hot summer has resulted in more recyclable waste than usual being left about.

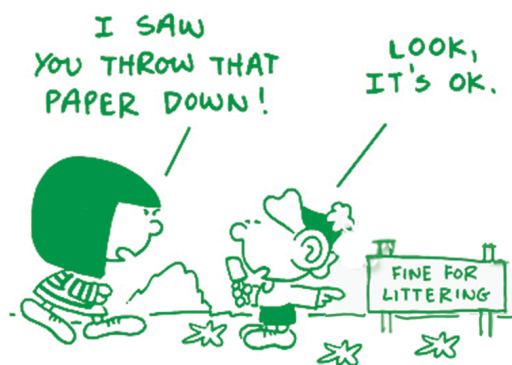
Events in Salisbury might make you worry about what to pick up. Always take care with what you are grabbing and where. (very sound advice in every situation! – Ed.)



Seen an empty tin, glass, plastic food or drink container lying on the roadside or in a car park? Many of these can still be recycled to save money and energy in a way that helps everybody. If it's there getting squashed or rolling about – pick it up and put it in a recycling bin - the streets will be cleaner and the village greener.

Even better, don't chuck as much to start with - use that red box instead and that means you too, kids 🗑️

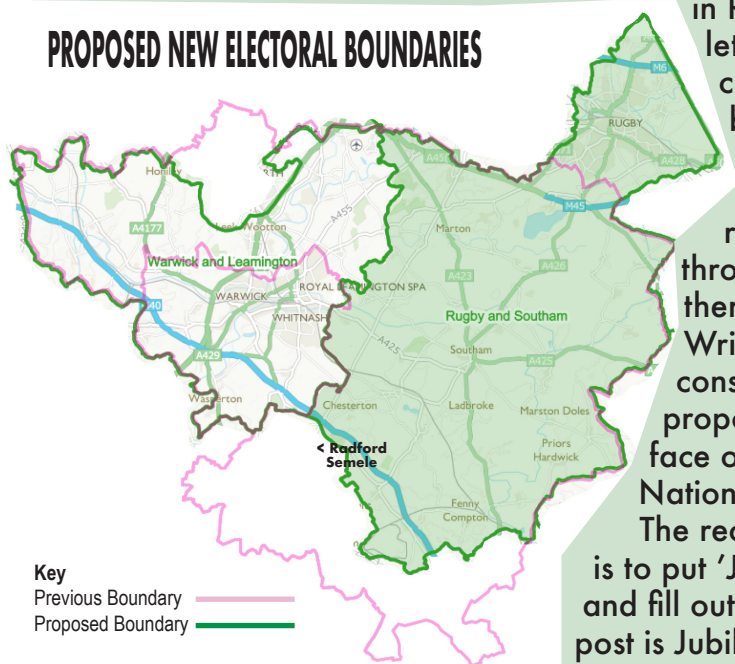
Now go back to the start again...(geddit? - recycling?)



– VILLAGE NEWS – CONSTITUENCY CHANGES FOR RADFORD SEMELE

As you may know, the government proposes to reduce the number of constituencies from 650 to 600. This obviously means that some boundaries must change. Many people had assumed that we would be incorporated into the Warwick and Leamington constituency but in fact we are to be in Rugby and Southam. This is despite a very strong letter of objection from the Parish Council during the consultation setting out why Radford Semele should be included in Warwick and Leamington, proximity being the most obvious.

PROPOSED NEW ELECTORAL BOUNDARIES



The consultation is at an end and, in our case, recommendations ignored, but this Bill must pass through Parliament to become law. This being so, there is still the possibility of contacting our MP Jeremy Wright to ask him to vote against the Bill. It might be considered questionable, in any case, why there is a proposal to reduce the number of constituencies in the face of a consistently rising population (see Office for National Statistics for further information on this).

The recommended method of contact, should you wish to, is to put 'Jeremy Wright MP' into your internet search bar and fill out the message form that comes up. His address for post is Jubilee House, Smalley Place, Kenilworth CV8 1QG and email jeremy@jeremywright.org.uk

Cars from nowhere

As the number of residences increase on both sides of the road, the need to be able to cross safely in a variety of places also increases.

This should be possible for adults without always walking to the crossing – we live in quite a long village. At times the road is quiet and then suddenly, a vehicle appears over a hill or around a bend as if from nowhere, going too fast; and too fast can be a difference of only 5mph – the difference between a pedestrian involved in a collision making a full recovery or not. Let's do what we can before it's too late.



Can you display a speed limit sign? Laminated copies available email: info@radfordforge.co.uk



Then and now... but where? Can you identify this village location?
Email answers & your photos to:
info@radfordforge.co.uk



Photo: Nick Rabson

ForGE Events

PUMPKIN CARVING

OPEN TO ALL

Sat. 27 October, 3-6pm

Community Hall, Lewis Road **FREE!**

TALK: WILD RADFORD

Chris Talbot - Habitat Biodiversity
Tues. 13 November 7pm

*Children Welcome

Baptist Church Hall, Lewis Rd **£4/£2***

*Tickets from Best-One Shop
or email: info@radfordforge.co.uk

best-one



Best One Village Shop

29 Lewis Rd, Radford Semele,
CV31 1UQ 01926 426972

**NEWSAGENT
MINI-MART**

**POST
OFFICE**

OPENING HOURS
Mon-Sat 6am-9pm
Sun 9am-9pm

**Canalside
Community
Food**

a community supported
agriculture scheme for
Warwick Area



*Like fresh air?
Love fresh food?*

- weekly box of fresh, organic seasonal food
- collect from the farm or Leamington.
- volunteer to help to grow it
- attend work days and social events

canalsidecommunityfood.org.uk

Call or text: 07758 340491



VHS2DVD



Have your treasured VHS videos or
camcorder tapes/SD cards transferred
to DVD or converted to MP4 files!

**Tel: 01926 338825 or
07733 368245**

www.vhs2dvd.info

Friends of Radford's Green Environment is a residents' community group which has a voice as well as active intentions to green up our space. We act for the benefit of the community and local wildlife. Membership is open to anyone who lives in and around Radford Semele.

**Radford
FoRGE**

Friends of Radford's Green Environment

www.radfordforge.co.uk

e: info@radfordforge.co.uk
t: 07985 647507



<https://goo.gl/TPdNbA>
[friendsofradfordsgreenenvironment](https://www.facebook.com/friendsofradfordsgreenenvironment)

New
Members
Welcome