



# Friends of Radford's Green Environment

Welcome!



# Friends of Radford's Green Environment

- **Powerless in the face of housing development?**
- **Want to do something positive for the village?**
- **Help preserve/ improve our green spaces?**
- **Improve access to footpaths and the canal?**



# What is FoRGE?

- A *positive* initiative
- Can-do approach
- Welcome new residents to a better village
- Gain some benefits for new and old residents from the developments





Friends of  
Radford's Green  
Environment

# Winning achievable goals

(rather than losing unwinnable battles)





# Friends of Radford's Green Environment

## Who are we?

- Emma
- Judy
- Naomi
- Dave
- You
- You
- You
- You
- You
- You





**Friends of  
Radford's Green  
Environment**

# Green Goals:

## 1) Radford SPACE program

Safe Public Access to our Community and Environment

- Foot and cycle paths
- Road crossings
- Safer roads
- Canal



# Green Goals:

## 2) Wild Radford

- Protecting, Promoting and Improving our spaces for wildlife and for our own “wild play”
- Enhance biodiversity in the village to make our green spaces a little bit “wilder”?
- Working with Warwickshire Wildlife Trust, County Ecology and other agencies.



# Green Goals:

**3) The Park – watch this space...**

**4) Floodwatch?**

sub-group/working party to look into the flood risks posed by new housing developments, and whether we can make a case for greater flood-prevention measures.





# Friends of Radford's Green Environment

## Areas of Focus:

### Southam Road/ Offchurch Lane:

Footpaths /cyclepaths

Pedestrian crossing?

Bus shelters

Traffic calming measures ?

### Canal:

Safe and convenient access to the canal for pedestrians, buggies, wheelchairs and cyclists at both ends of the village





# Friends of Radford's Green Environment

## Access to Footpaths:

- Help residents existing and new to connect with the surrounding countryside
- People can see easily where they are allowed to walk
- Canal can be more accessible: circular walk and safe way to get to town by bike or on foot



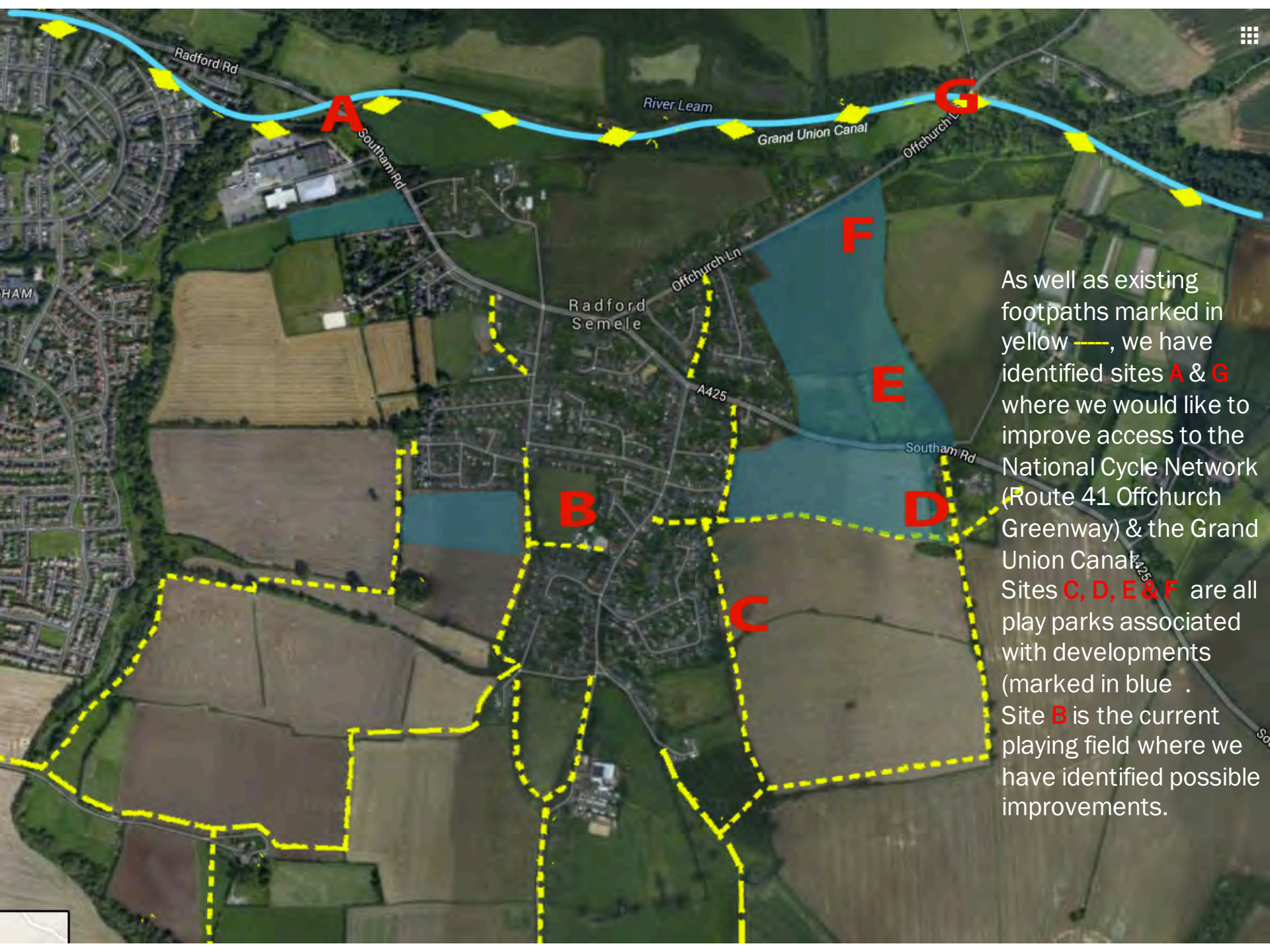


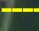
# Friends of Radford's Green Environment

## Working together:

- Work with any agencies that can help us to achieve these aims
- Sustrans (cycle ways),
- The Canal and River Trust,
- All the levels of local council - parish, district and county
- We are already talking to and meeting some of these agencies





As well as existing footpaths marked in yellow , we have identified sites **A & G** where we would like to improve access to the National Cycle Network (Route 41 Offchurch Greenway) & the Grand Union Canal. Sites **C, D, E & F** are all play parks associated with developments (marked in blue). Site **B** is the current playing field where we have identified possible improvements.



## Neighbourhood Plan:

- 'Gives communities direct power to develop a shared vision for their neighbourhood and to shape the development and growth of their local area'\*
- BUT 'where the ambition of the neighbourhood is aligned with the strategic needs and priorities of the wider local area'
- \*taken from:  
Planning Practice Guidance <http://planningguidance.communities.gov.uk>



## Neighbourhood Plan

### Who has one?

- 13 are listed on WDC website - including Barford, Budbrooke and Kenilworth
- Whitnash's plan was recently accepted.



## Neighbourhood Plan:

- Must have input from residents, although parish councillors can lead it
- Can take as long as two years to finalise
- Residents must be consulted at the beginning
- Local authorities, including planning authority, must view and accept the plan
- Residents must then vote to accept the plan that has been developed





# Friends of Radford's Green Environment

## Neighbourhood Plan:

- A long but worthwhile process
- Volunteers are needed
- Contact Brian Friar (parish councillor) [brianfriar@yahoo.co.uk](mailto:brianfriar@yahoo.co.uk)





# Friends of Radford's Green Environment

## **THE PARK – AN UPDATE**

So far...

Through fun days we raised £10,000

Through Awards for All - £10,000

Through Radford PC - £10,000

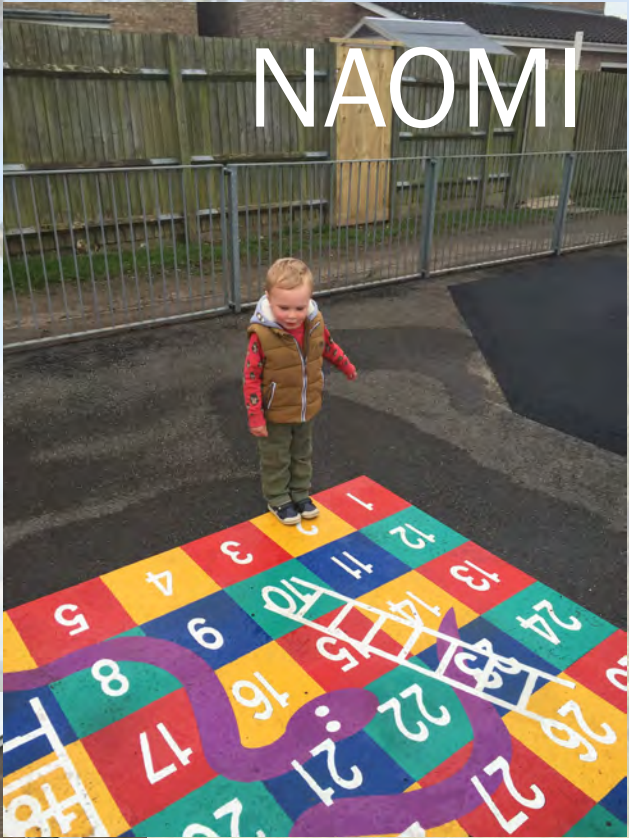
And we got....





LOTTERY FUNDED

THIS!!!



NAOMI



Radford  
**FORGE**  
Friends of Radford's Green Environment





# Friends of Radford's Green Environment

**NEXT...**



**We have raised just under - £35,000  
through WREN Landfill Trust and RUCIS.**

**What we will do with it, is on the next slide!**





# Friends of Radford's Green Environment

COMING NEXT...







# Friends of Radford's Green Environment

## WHAT NOW?

A working party to continue the good work within our park, to channel available funding to make the space as good as we possibly can for the residents of the village.

### Perhaps things to look at:

- Park cleanups
- Wildflower areas
- Shade for play





# Friends of Radford's Green Environment

## How can you help?

- Any skills, knowledge or interest you may have relating to FoRGE's aims and Green Goals are welcome. You may not have expertise, but a capacity to help get things done will be appreciated.
- We will organise community activities from time to time, to bring people together and to encourage exploration and use of our village spaces. Just come along! (If you want to help with organising, get in touch).
- Register to become a member to show your support of FoRGE's aims – you don't have to pay or do anything, but if we can demonstrate a strong village following, it will add weight to us as a group in our endeavours.





# Friends of Radford's Green Environment

# Join now!

## Leave your details

## Complete joining form (no commitment!)



Friends of Radford's  
Green Environment (FoRGE)  
Join Us

### Why Join?

- The more supports we can demonstrate, the greater our voice and influence on agencies which can help us greening the village and green corridors nearby.
- You can help us make decisions.
- Attend work days clearing and tidying open spaces.
- We need your input
- Membership is Free

To join, complete this form and click 'Send' or print it out and drop it into Best-One Radford Store-29.Lewis.Rd

Name

Address

Phone

Email

[<Click here to Send>](#)

Thank you for help.





# Friends of Radford's Green Environment

## How to join?

Via Website:

[www.radfordforge.org](http://www.radfordforge.org)

Email us:

[info@radfordforge.org](mailto:info@radfordforge.org)

Phone / Text Us:

07985 647507



Facebook  
Group:

<https://goo.gl/TPdNbA>

friendsofradfordsgreenenvironment

Thank you for your interest.